



NOURISHING THE NATIONAL STATISTICAL SYSTEMS TOWARDS ONE DATA INDONESIA

Indonesia experience



Phillipines, February 2020



Portrait of Indonesia statistical and its challenges



Sensus
Penduduk
2020
#MencatatIndonesia



Current Indonesia Snapshot



- more than 260 Million Population
- Gini Ratio 0.389



16.056 islands

Area: 1.916.862,20 *km*²



GDP \$228,418 million

Economic Growth: **5.17% (2018)**

34 Provinces

514 Municipality



- 34 Ministries
- 32 Institution/ Agency Non-Ministries



Joko Widodo

President of Republic Indonesia



BPS Statistics-Indonesia demography and Challenges

15.929

Employee

FACTS & FIGURES

November 2019



Millenial Generation < 40

- National level is about 57,50%
- Di java, bali, lampung < 50%
- Di East Indonesia > 70%



Additional task as a mandatory

- **Coordinator of National Statistics System and One Data Indonesia**
- Workload exceed capacity
- Overlapping activities and contents (SILO approach)



FUTURE VISION

- New Competencies of Statistics, IT and supporting aspects
- New data demand and international standard
- National Statistics System as a response to worldwide issues

BPS in Number **2019**



- > 500 municipal office
- 34 Provincial office



RiGIDITY OF REGULATION

- National Regulations are very strict and rigid.
- Organization restructuring are not flexible



Statistics area in Indonesia

The Law Number 16 of 1997 → About Statistics
(Statistic divide into 3 types, namely **Base** Statistic,
Sectors Statistic and **Specific** Statistic)

The Government Regulation Number 51 of 1999
→ About National Statistical Activities

BASE STATISTIC

- Used for Broad purpose by Government and society
- Characteristics : Cross-sectoral, Macro, Nationals



National Statistic
Office- Statistics
Indonesia

SECTORAL STATISTIC

- More thematic and utilized by certain agencies to meet their information needs.
- Characteristics : thematic, more detail



Ministries, National
Agencies and
institution, Local
governments,

SPECIFIC STATISTIC

- Very specific and used for certain purposes.
- Characteristics : Specific topics, narrow theme



Individual,
Academics, Private
sectors etc.



STATISTICS INDONESIA

Positioning of BPS Statistics-Indonesia



Sensus
Penduduk
2020

#MencatatIndonesia



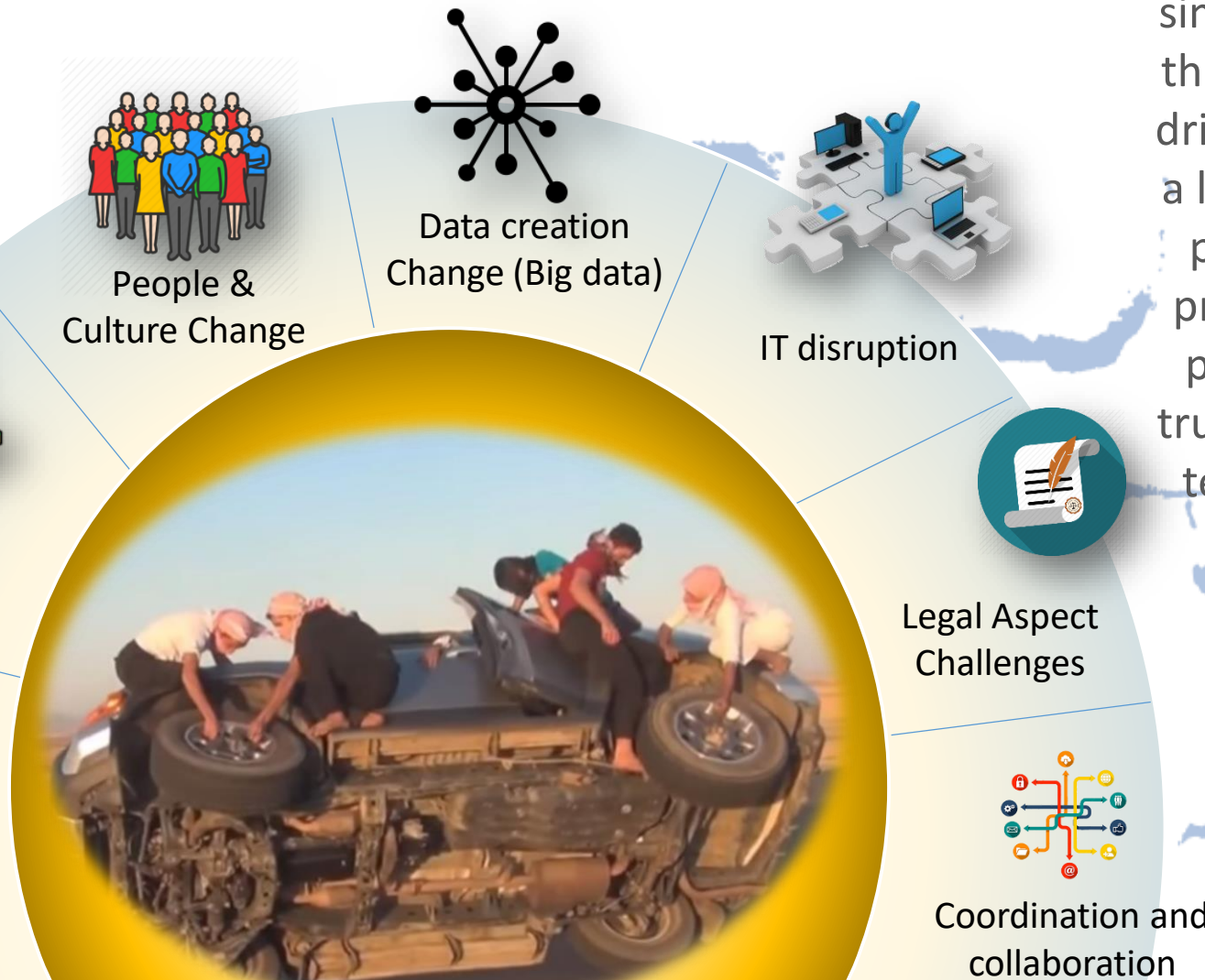
Transformation Challenges

“Transformation is similar to change the tire while we driving, therefore a leader must be present in the process, driving properly while trusting the work team to fix the gap”



Suharianto

Indonesia Chief Statistician



SILO business processes

People & Culture Change

Data creation Change (Big data)

IT disruption

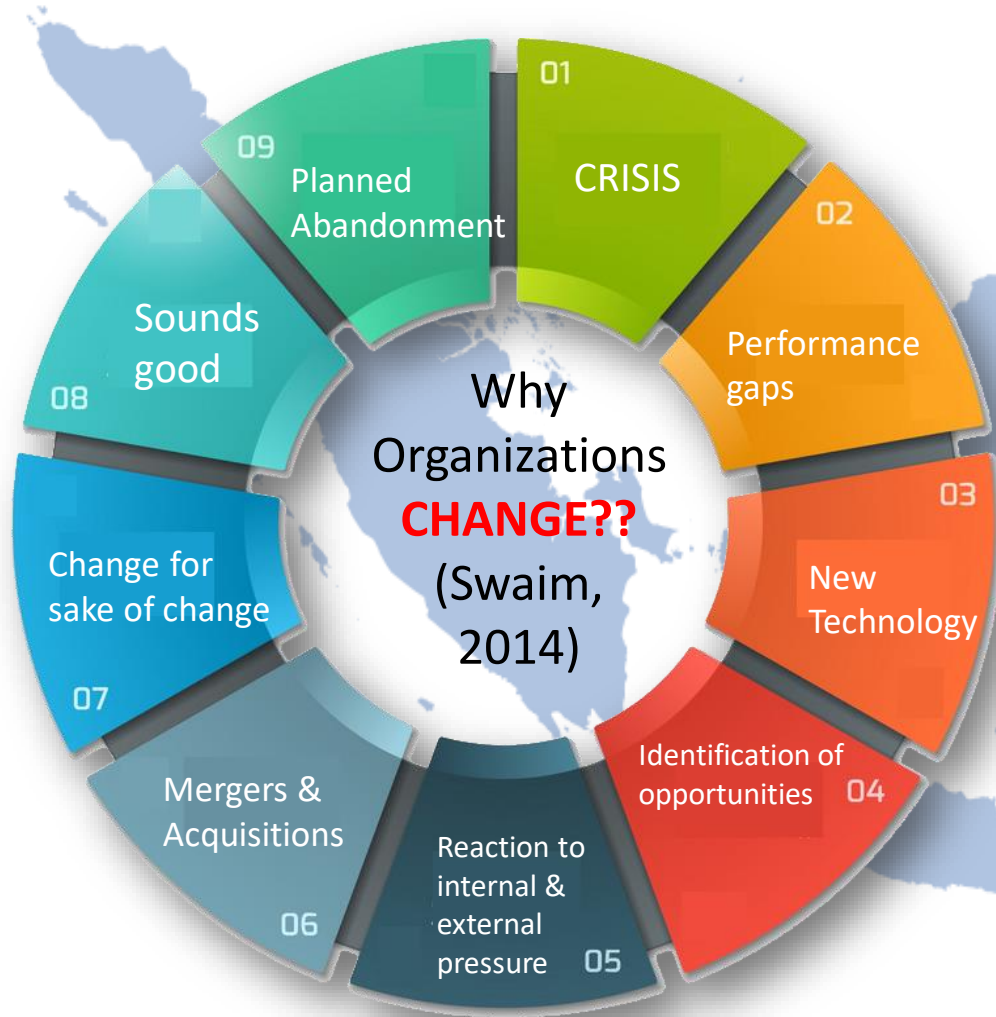
Legal Aspect Challenges

Coordination and collaboration

Simultaneous Current Business (BAU) & New business process



Why We Have to Change



MOTIVES

Performance Gap

SILO business processes, output coherency, processes efficiency

New Technology

Satellite technology, Area Sample Frame, media survey shifting (CAPI, CAWI, etc), Big data

Identification of opportunities

new methodology, technology and utilization of administrative data.

Reaction to internal & external pressure

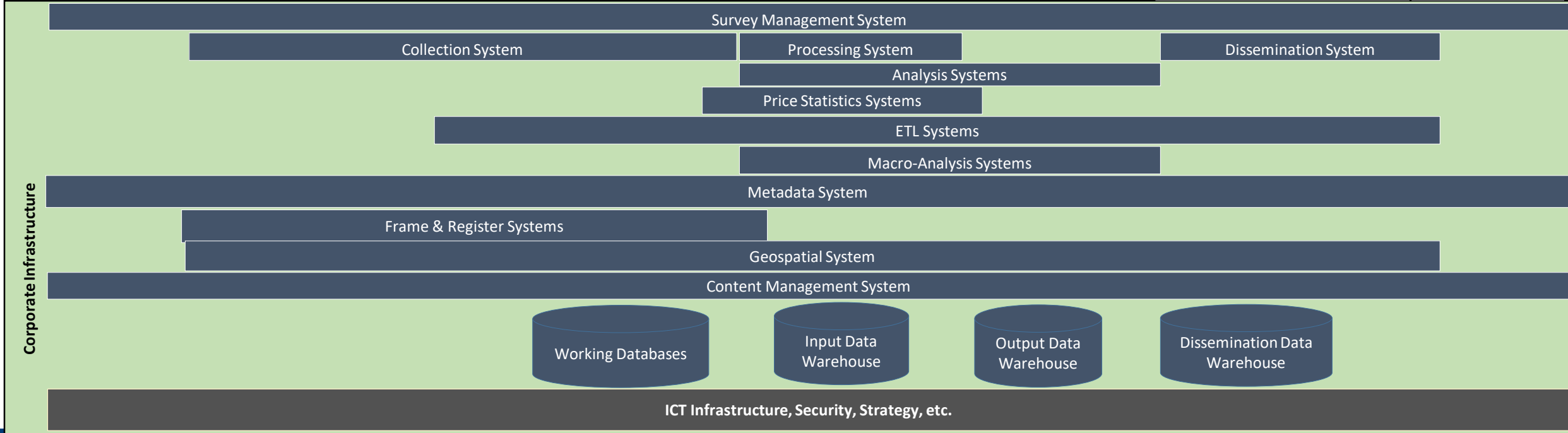
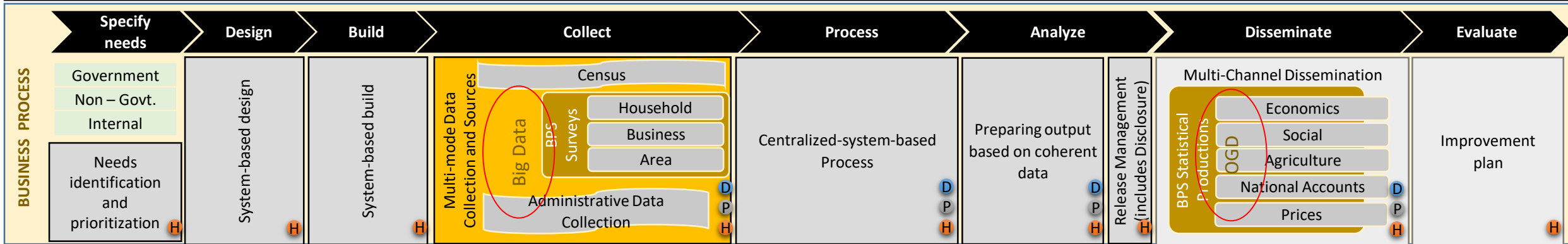
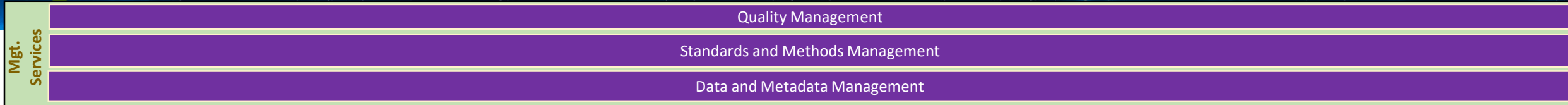
National Bureaucratic Reform program and International standardization of Statistical Quality & Business Process.

Change for sake of change

BPS motivation becomes World class NSO



BPS'S TRANSFORMATION APPROACH (SBFA)



Enhanced Human Resources Capacity



BPS Transformation Strategy

INWARD APPROACH

INTERNAL ORGANISATION TRANSFORMATION



Statistics Business
Process Pillar



Information &
Technology Pillar



Organization
& HR Pillar

OUTWARD APPROACH

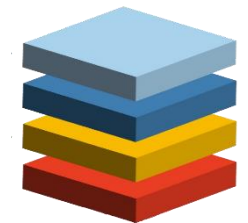
DATA ECOSYSTEM AND COLLABORATION



Legal Aspect
Strengthening



Strengthening
Coordination &
Collaboration



Simplify
Bureaucracy



STATISTICS INDONESIA

INFORMATION AND TECHNOLOGY

As Enabler



Sensus
Penduduk
2020

#MencatatIndonesia



BPS IT AS ENABLER (1)



Core



Integrated Collection System



Integrated Processing System



Macro Analysis System



Integrated Dissemination System

Multimode Data Collection, using PAPI, CAPI dan CAWI, and Administration Database



BPS IT AS ENABLER (2)



Data Integration



Imputation
and Editing



Process
Monitoring
System



Other IPS
Module

Combined data processing and analysis features. At the moment using R as the core engine .

Core



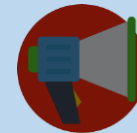
Integrated Collection System



Integrated Processing System



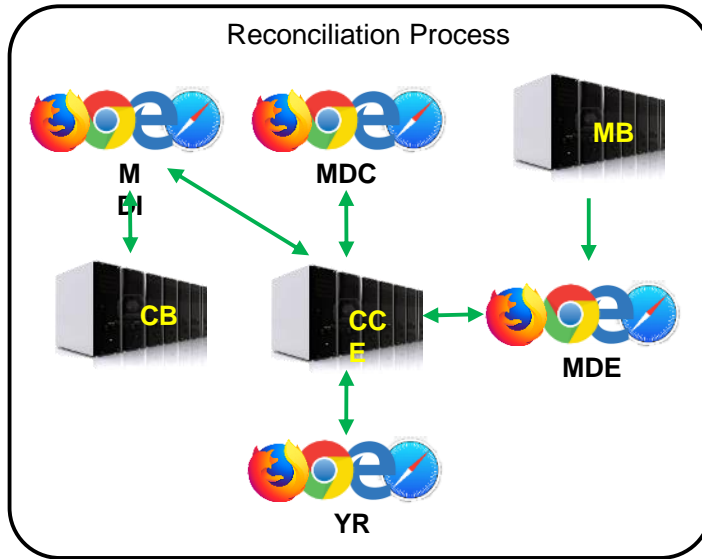
Macro Analysis System



Integrated Dissemination System



BPS IT AS ENABLER (3)



Facilitating National Balance Sheet to calculate Full Sequence of Account (FSA).

Core



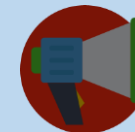
Integrated Collection System



Integrated Processing System



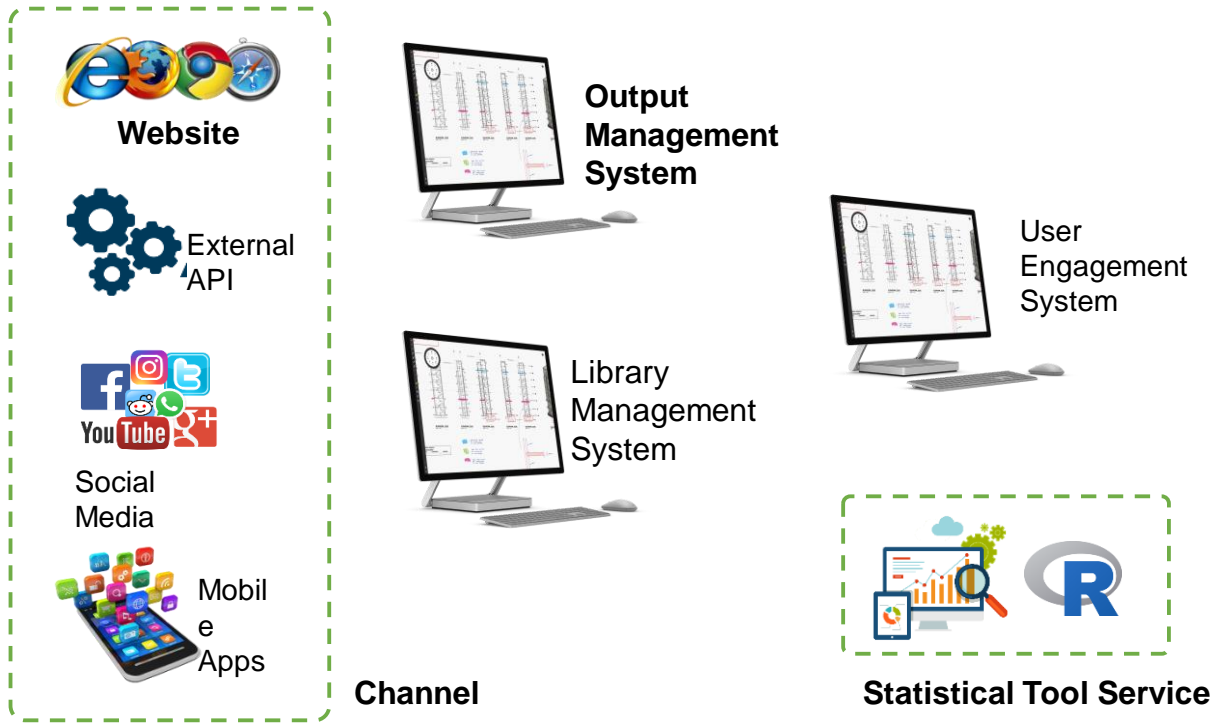
Macro Analysis System



Integrated Dissemination System







BPS IT AS ENABLER (4)



Upgrading the system Dissemination with a table builder, dynamic map, and dynamic chart. Providing new experiences for the public in accessing data.

Core

-  Integrated Collection System
-  Integrated Processing System
-  Macro Analysis System
-  **Integrated Dissemination System**



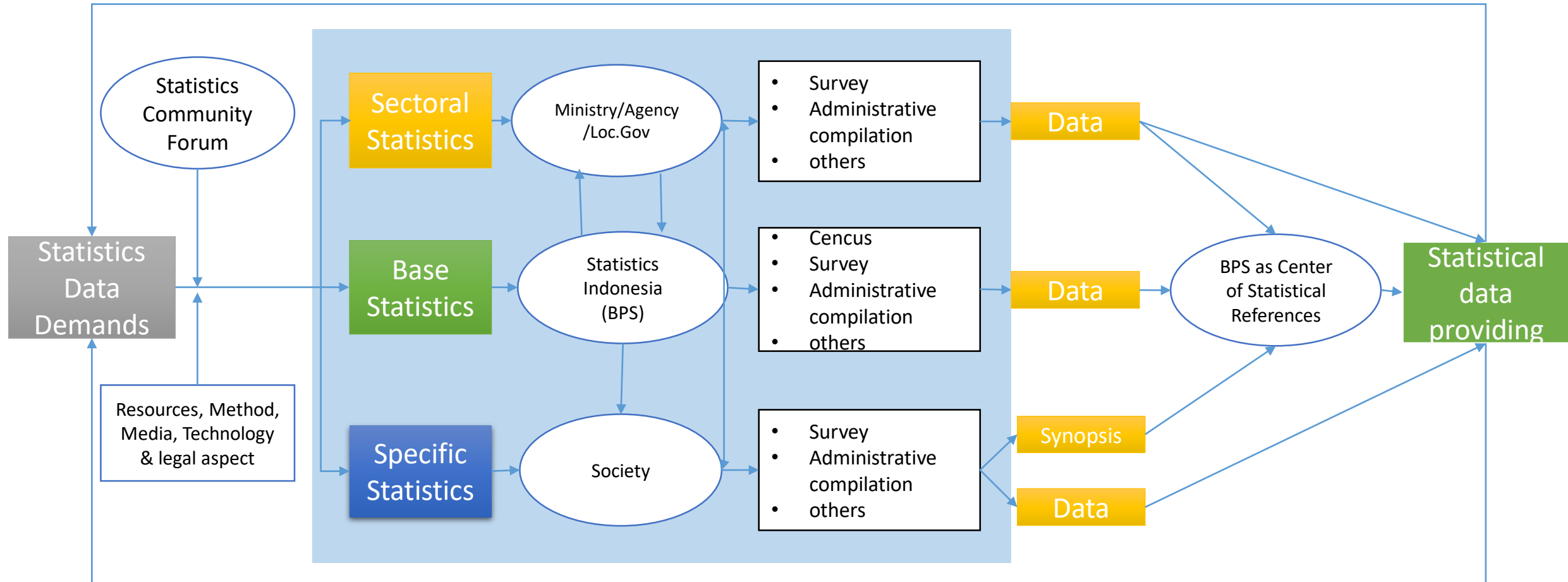
Toward One Data

Connectivity





Framework of National Statistical Systems





BADAN PUSAT STATISTIK

THANK YOU

Salamat Po



Sensus
Penduduk
2020

#MencatatIndonesia

